

# RPA and AI

The key components for automation, with different approaches to solve the business problems effectively.

## Basic Definition

A software robot that mimics human actions.



Simulation of human intelligence by machines.



## How does it work?

Automation in the RPA solution is based on well defined and repetitive rules. It is more process-centric.

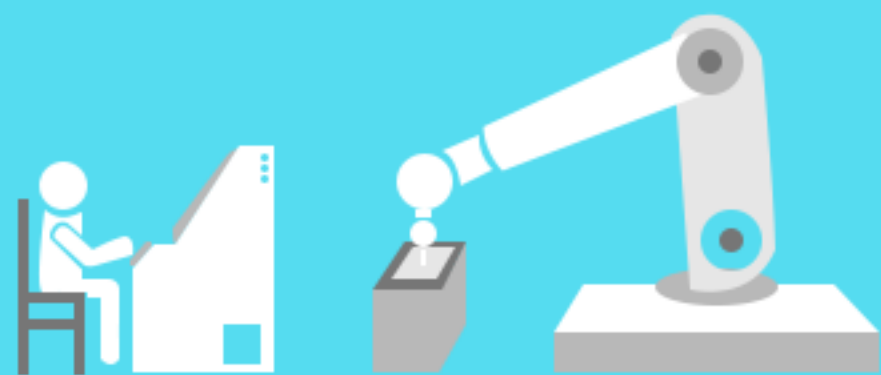


AI Solution relies on large quantity of data to create own rules without explicit programming. It is more data-driven.



## What does it do?

RPA solution mimics human actions, use cases, and performs the tasks in a process.



System learns from data and mimics human intelligence such as visual recognition, speech recognition, etc.



## Impact on IT system

No or very minimum change required in current IT system.



Significant changes could be required in current IT system.



## What about the results?

Results from a RPA based solution are 100% deterministic in nature.

100%

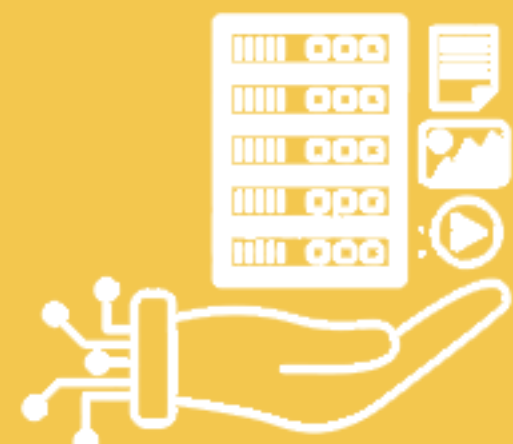


Results from an AI based solution are stochastic in nature.



## Data needs

Works only with structured data (in some cases semi-structured as well).

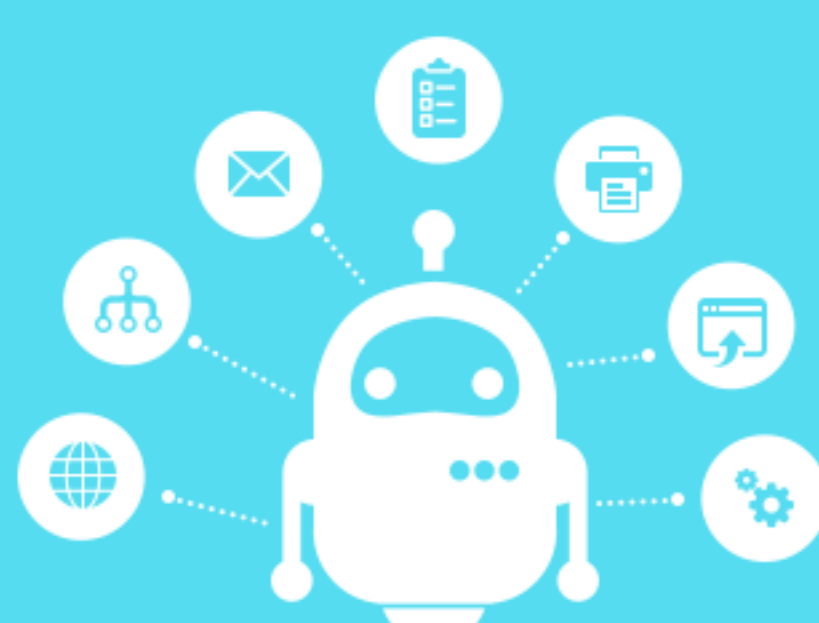


Works with both structured and unstructured data.



## Examples

Form filling, sending email, copy & paste jobs, printing, etc.



Sentiment analysis, image recognition, speech recognition, prediction, etc.

